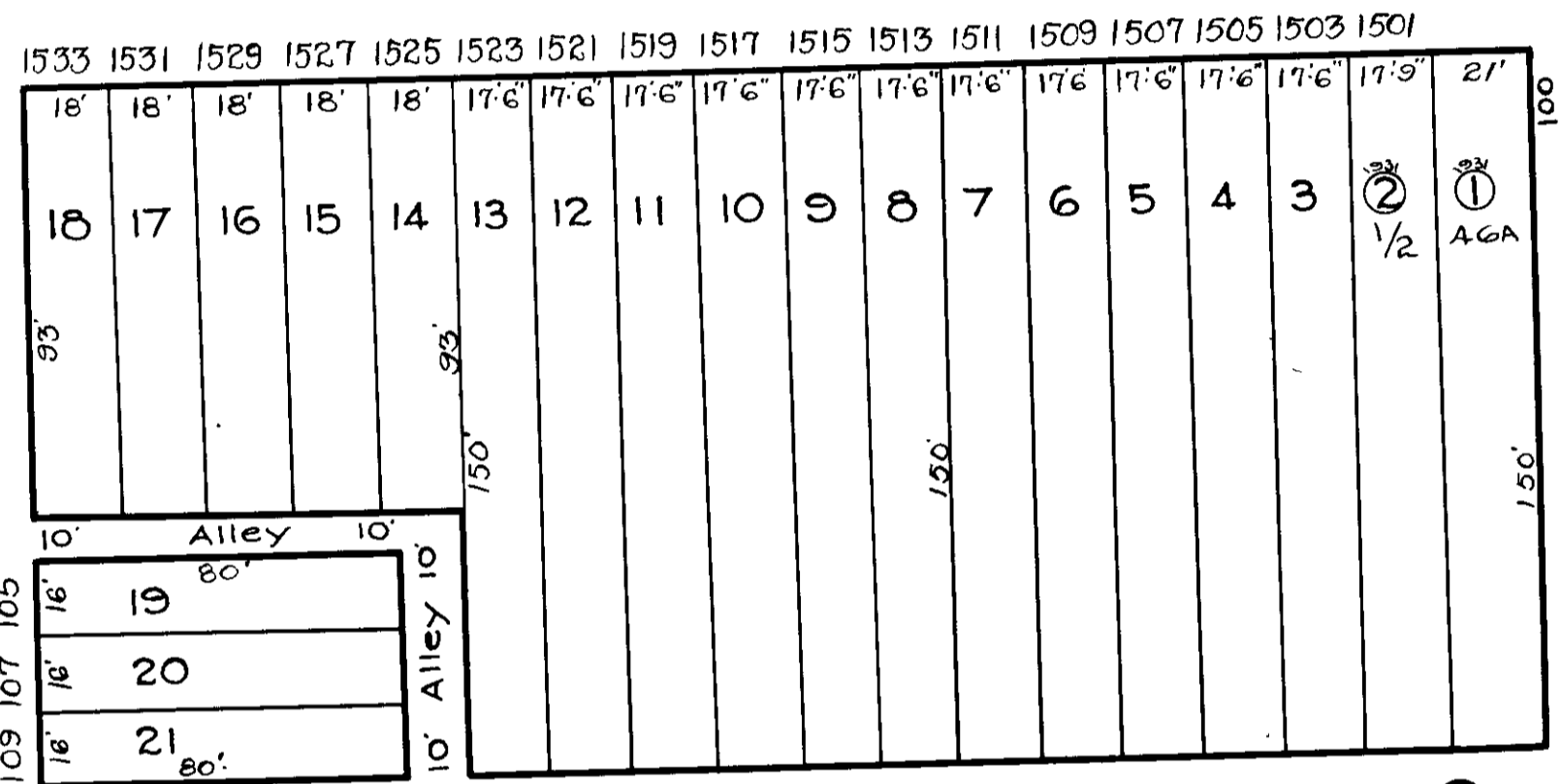


LOTS 28 & 29 DIM CHANGED C.S.H. 84-042

W. LOMBARD ST.

ST.

ST.

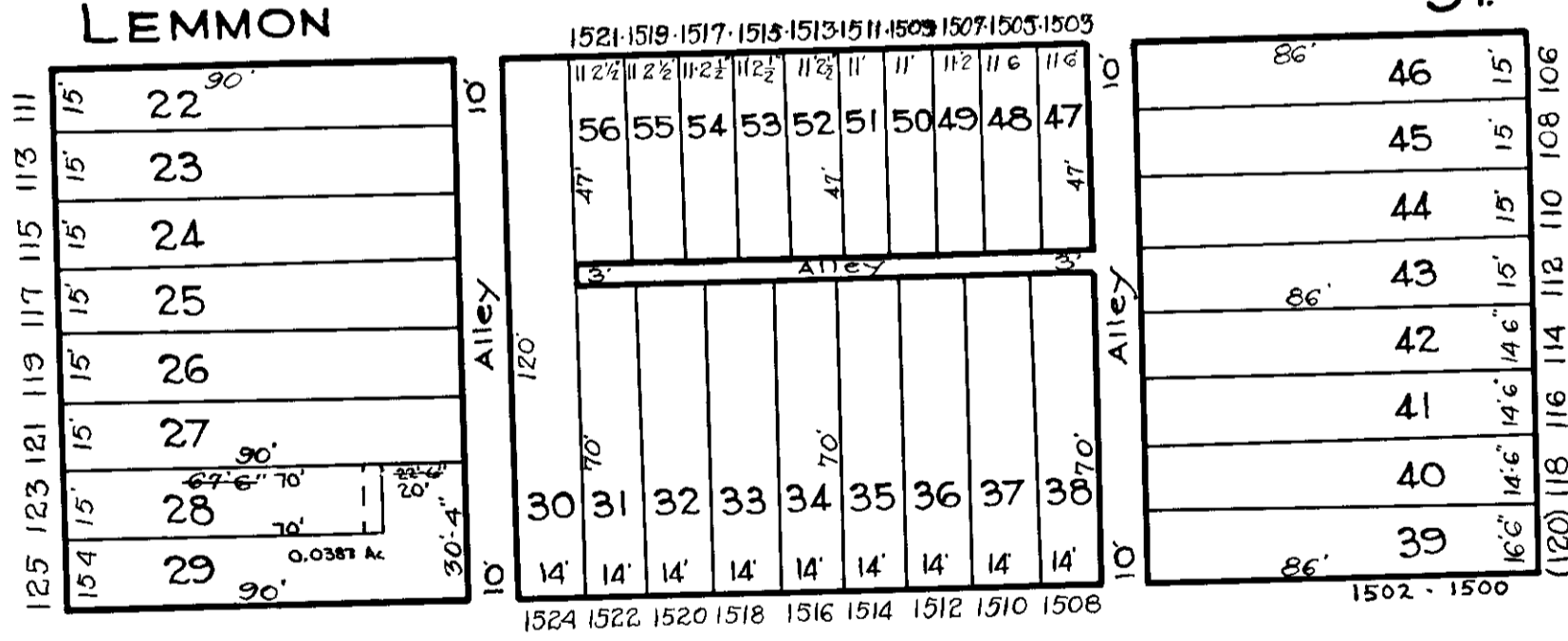


ST.

S. GILMOR

LEMMON

ST.



S. STRICKER

W. PRATT ST.

ST.

TRACED BY G. Moorehead
 LETTERED BY G. Moorehead
 Joe J. Rokosky
 CHECKED BY:

NOTICE
 THIS IS A REAL PROPERTY PLAT AS PROVIDED FOR UNDER ARTICLE 76(1) OF THE CITY CHARTER. IT IS COMPILED FROM TITLE AND OTHER SOURCES AND IS NOT AN AUTHENTIC SURVEY

CITY OF BALTIMORE
 DEPARTMENT OF PUBLIC WORKS
 BUREAU OF SURVEYS
 PROPERTY LOCATION DIVISION
 WARD 19 SECTION 12
 BLOCK 246
 SCALE 1/4" = 40 FT. DATE July 1929