

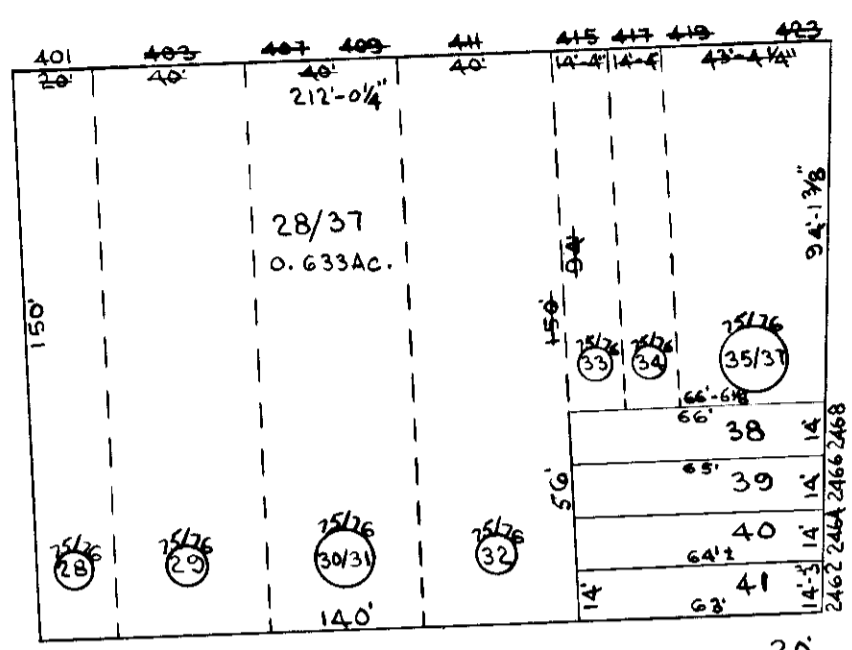
3834

3836-B

E. 25TH ST.

ST.

AVE.



REVISIONS
 BLK REVISED PER PLS LOT 28/37 PER
 A.P.P. C.S.H. 76-108-76-112.

WARE ST.

20' ALLEY 20'

3827

3825

27	100'-100'-9"	90'-89"	42	14'
26	100'-99'-7"	89'-6" 82'-6"	43	14'
25	107'-6" 99'	89'-3" 82'-4"	44	14'
24	106'-9" 98'-5"	89' 82'-3"	45	14'
23	106'-97'-10"	88'-9" 82'-2"	46	14'
22	105'-9" 87'-3"	88'-6" 82'-1"	47	14'
21	104'-6" 86'-8"	88'-3" 82'	48	14'
20	103'-9" 86'-1"	88' 81'-11"	49	14'
19	102'-9" 85'-6"	87'-9" 81'-10"	50	14'
18	102'-2" 84'-11"	87'-6" 81'-9"	51	14'
17	101'-4" 84'-4"	87'-3 1/2" 81'-8"	52	15'
16	100'-6" 83'-9"	87'-0 3/4" 81'-7"	53	15'
15	99'-8" 83'-2"	86'-9 1/2" 81'-6"	54	15'
14	98'-10" 82'-7"	86'-6 3/8" 81'-5"	55	15'
13	98' 92'	86'-3 3/4" 81'-4"	56	15'
12	97'-2" 81'-5"	86'-0 7/8" 81'-3"	57	15'
11	96'-4" 80'-10"	85'-10" 81'-2"	58	15'
10	95'-6" 80'-3"	85'-7 1/2" 81'-1"	59	15'
9	94'-8" 80'-8"	85'-4 1/2" 81'	60	15'
8	93'-10" 80'-1"	85'-1 1/2" 80'-11"	61	15'
7	93' 88'-6"	84'-10 5/8" 80'-10"	62	15'
6	92'-3" 87'-11"	84'-7 3/4" 80'-9"	63	15'
5	87'-4"	84'-4 3/8" 80'-8"	64	15'
4	87'-6" 87'-4"	84'-1 7/8" 80'-7"	65	15'
3	86'-8" 86'-9"	83'-11" 80'-6"	66	15'
2	85'-10" 86'-2"	83'-8 1/2" 80'-5"	67	15'
1	85' 88'-7"	83'-5 3/4" 80'-4"	68	15'
		83'-2 1/4" 80'-3"	69	15'
		82'-11 3/8" 80'-2"	70	15'
		82'-8 7/8" 80'-1"	71	15'
		82'-5 1/2" 80'	72	14'

E. 24TH ST.

BARCLAY

BRENTWOOD

CAMP ST.

E. 24TH ST.

3823

3824

TRACED BY D. GREEN
 LETTERED BY D. G.
 CHECKED BY

NOTICE
 THIS IS A REAL PROPERTY PLAT AS PROVIDED
 FOR UNDER ARTICLE 76(d) OF THE CITY CHARTER
 IT IS COMPILED FROM TITLE AND OTHER
 SOURCES AND IS NOT AN AUTHENTIC SURVEY.

CITY OF BALTIMORE
 DEPARTMENT OF PUBLIC WORKS
 PROPERTY LOCATION DIVISION
 WARD 12 SECTION 15
 BLOCK 3826
 SCALE 1"=50' DATE OCT 1915